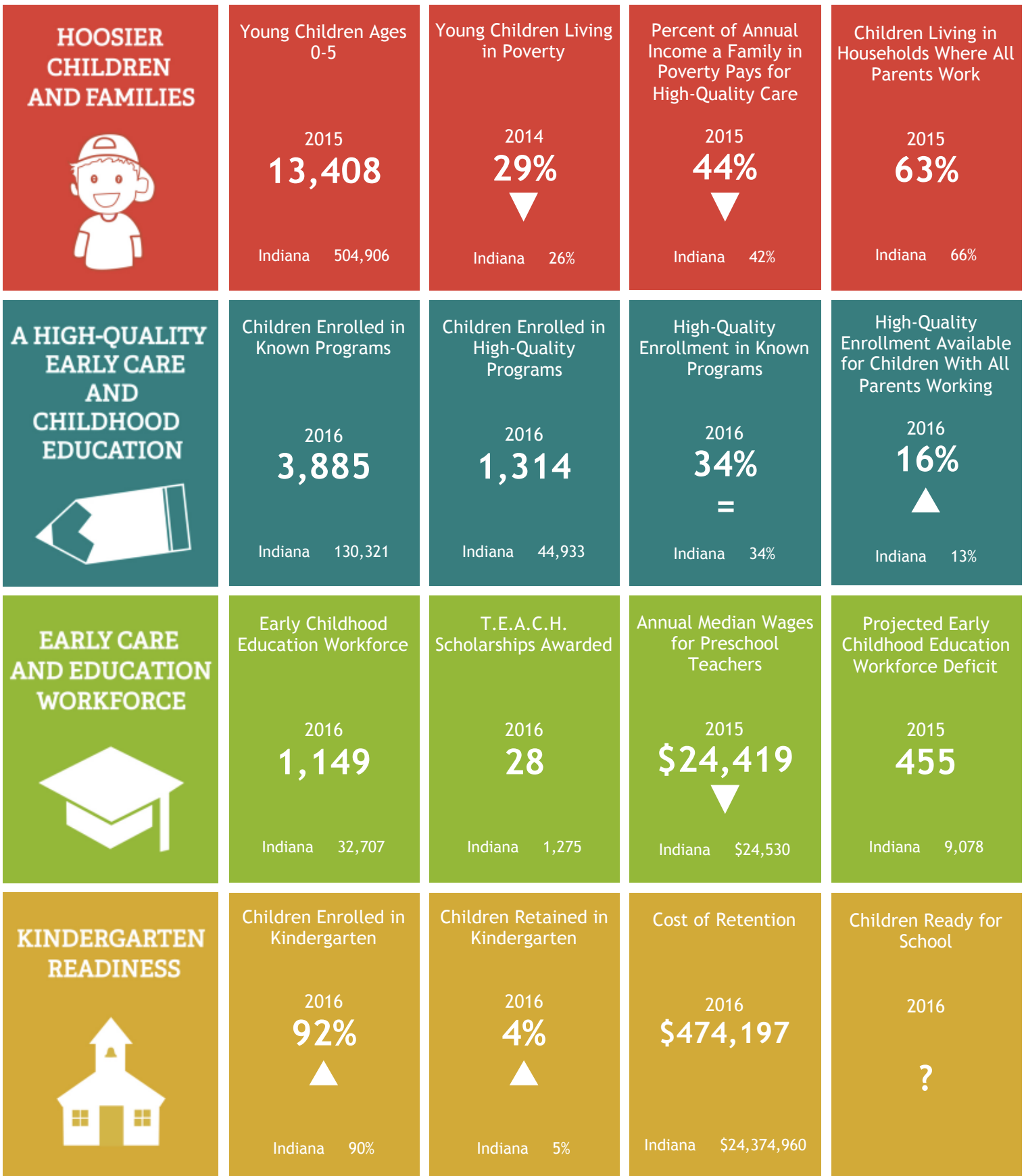
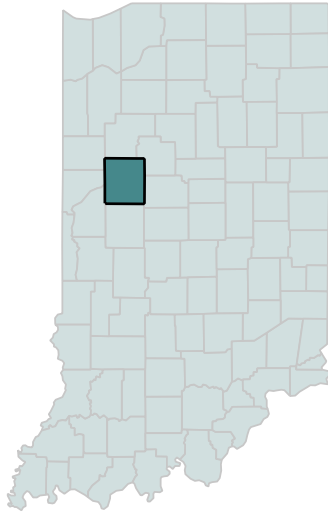


# 2017 ELAC Dashboard Tippecanoe County Profile

Better ▲ Worse ▼  
(Compared to State)

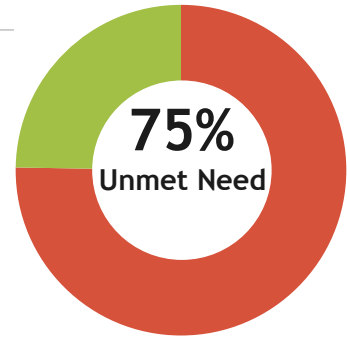


# 2017 ELAC Dashboard Tippecanoe County Profile



## Unserved 4-Year Olds in High-Quality Subsidized Pre-K

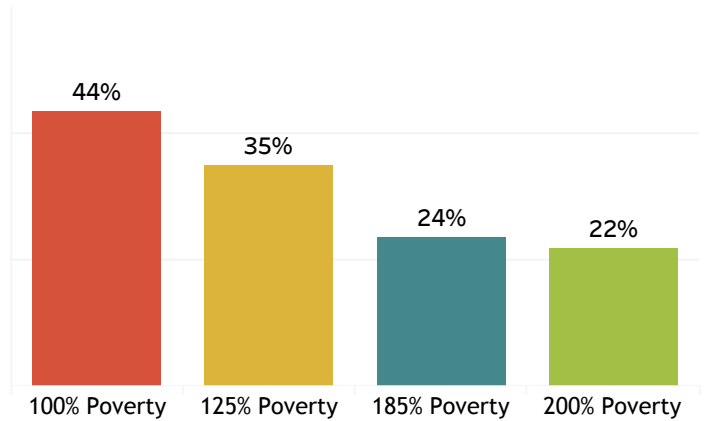
All Children Age 4	2,160
Low-income Children Age 4	1,076
Children in Head Start	158
Children in CCDF	97
Children in EEMG	11
Children in OMW	0
Total Served	266
Potentially Unserved	810



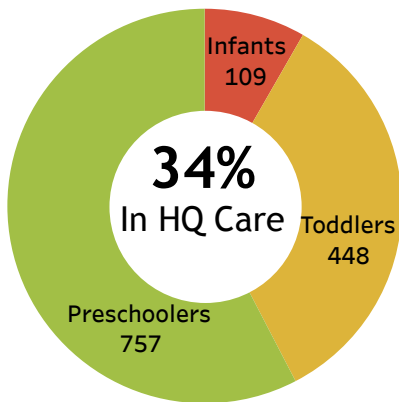
## Average Cost of High-Quality Care (Total State Average: \$8,482)



## Percent of Income Spent on High-Quality Care (Family of 3 With One Child)



## High-Quality Enrollment by Age



## Early Care and Education Programs by Type of Provider

	Child Care Centers	Family Child Care	Public Preschool	Registered Ministries
Known	21	113	22	19
On PTQ	20	55	0	1
High-Quality	16	12	0	0

## Pathway to Success

