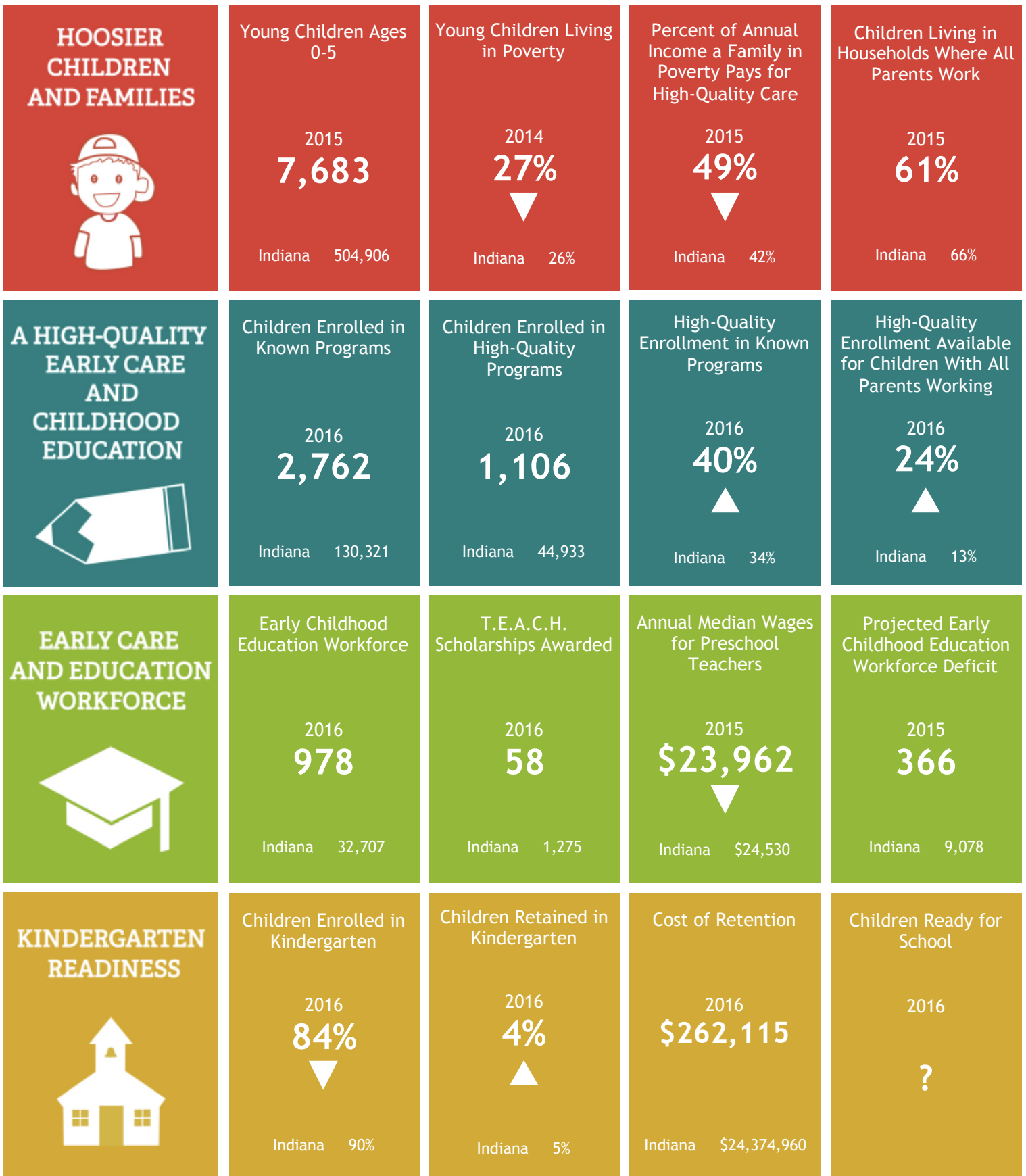
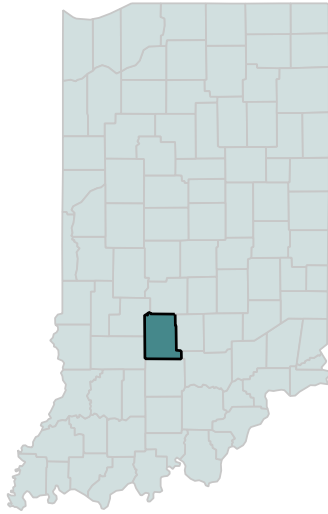


# 2017 ELAC Dashboard Monroe County Profile

Better ▲ Worse ▼  
(Compared to State)

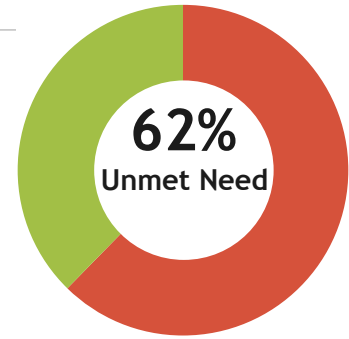


# 2017 ELAC Dashboard Monroe County Profile

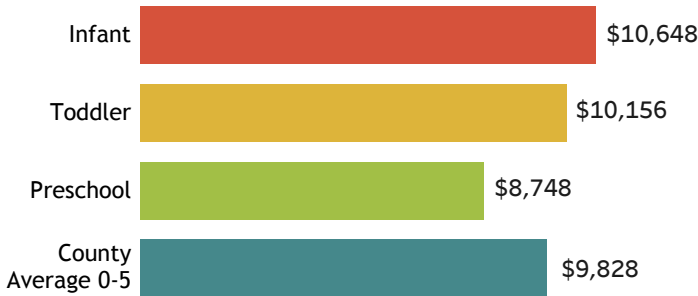


## Unserved 4-Year Olds in High-Quality Subsidized Pre-K

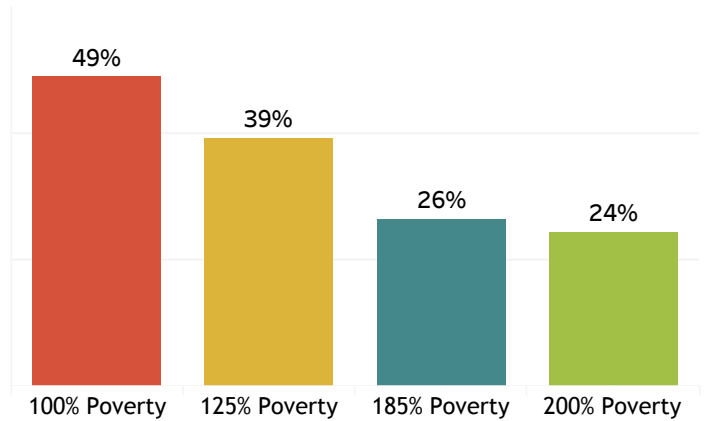
All Children Age 4	1,234
Low-income Children Age 4	597
Children in Head Start	177
Children in CCDF	48
Children in EEMG	0
Children in OMW	0
Total Served	225
Potentially Unserved	372



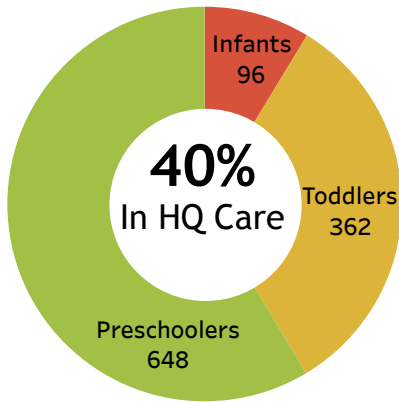
## Average Cost of High-Quality Care (Total State Average: \$8,482)



## Percent of Income Spent on High-Quality Care (Family of 3 With One Child)



## High-Quality Enrollment by Age



## Early Care and Education Programs by Type of Provider

	Child Care Centers	Family Child Care	Public Preschool	Registered Ministries
Known	22	62	28	9
On PTQ	21	44	8	1
High-Quality	18	9	6	0

## Pathway to Success

